

# DECT Phone



GR-8206-SPB / GR-8106-SPB

GR-8206-SPBU / GR-8106-SPBU

**QIG**

**V 1.00**

---

# 1 Over view

This Phone is a full-feature telephone that provides voice communication. Read this QIG carefully to learn how to operate this product and take advantage of its features.

## Package Contents

When unpacking the phone, ensure all the following items are present and undamaged. If anything appears to be missing or broken, contact your dealer for a replacement.

1. Base Unit
2. RJ-45 Cable
3. Quick Installation Guide(This document)

## 2 Product Description

The following contains important information to help you familiarize with the functions of the phone.

### Front View

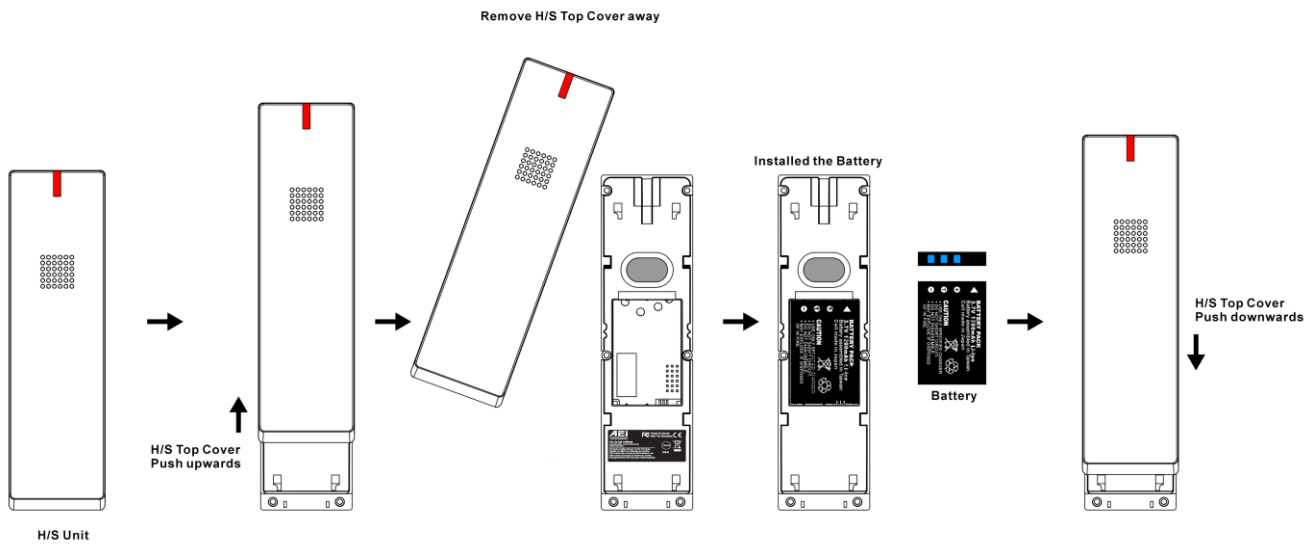


Name	Description
1 Ring Indicator	A red light indicator means that you have incoming calls.
2 Dialing Pad	Press the buttons to dial a phone number or enter alphabetical characters.

	Name	Description
3	LINE 1 / LINE 2	There are two LINEs bottom in this handset.
4	End key	Press to finish the call
5	Function keys	
	HOLD	Press to put an active call on hold.
	SPEAKER	Press to start talk without handset.
	VOLUME	Press to increase or decrease the volume of the ringer tone.

## 3. Installation

The following illustration shows how to install the handset and battery.



## 4 Operation

### Answering a Call

An incoming call is indicated by a ringing tone and a flashing indicator at the top of both handset and base units. You can answer the call by doing one of the followings:

- Pick up the **handset** to answer the call.
- Press the **Line (Line1/Line2)** key on the handset to answer the call.

### Making a Call

#### Dialing with the Keypad

- Enter the telephone number with the alphanumeric keypad and the call will start automatically.

### Using the Speed dial keys

You can use the 6 pre-assigned speed dial hotkeys, to configure the most commonly dialed numbers. Use the function to dial a number quickly, instead of keying in a complete number.

To call a number using speed dialing, follow the steps below:

- Press the speed dial hotkey that has been pre-assigned to the phone number and the call will start automatically.

## Call Options

While a call is in progress, a number of additional options are available.

## Using the Speaker Phone

For hands free operation, you can use the built-in speaker to talk on the phone. To use the speakerphone, follow the steps below:

- While talking on the phone, press the **SPEAKER** key on the phone to enable the Speakerphone function.
- Press **SPEAKER** key again to terminate the call.

## Putting a Call on Hold

You may want to put a call on hold temporarily while doing some work or attending to a second incoming or outgoing call. To put a call on hold, do one of the following:

- Press the **HOLD** key on the phone to put the call on hold.
- When you receive a second call, press the next available **LINE** key to attend to the new call, and the first call will be put on hold automatically.

## Charging the Handset Battery

You would need to charge the handset battery before using the handset.

- Install the battery into the handset.
- Place the handset onto the base unit and base unit will start to charge the handset automatically.
- The charging indicator lights up in red during charging progress. The LED goes off after the handset battery is fully charged.

# 4 Support

For technological support, please email to [support@aeicommunication.com](mailto:support@aeicommunication.com).

---