

# VR-8X00-SPBU



## Quick Guide V 1.00

*VR-8X00-SPBU DECT peripheral handset phone*

# 1. Overview

This phone is a full-feature telephone that provides voice communication. Read this QIG carefully to learn how to operate this product and take advantage of its features.

## Package Contents

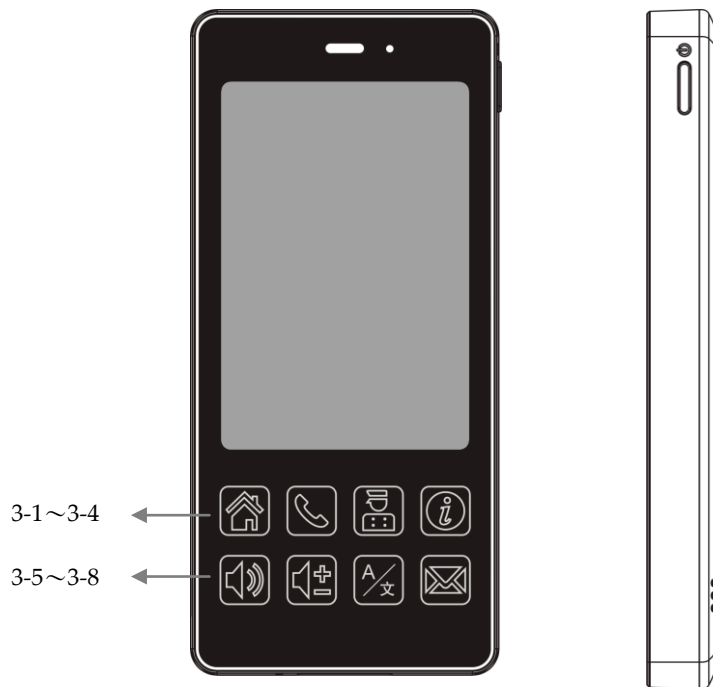
When unpacking the phone, ensure all the following items are present and undamaged. If anything appears to be missing or broken, contact your dealer for a replacement.

1. Cordless Handset
2. Charging Stand
3. Battery
4. AC Adaptor
5. Quick Installation Guide (This document)

# 2. Product Description

The following contains important information to help you familiarize with the functions of the phone.

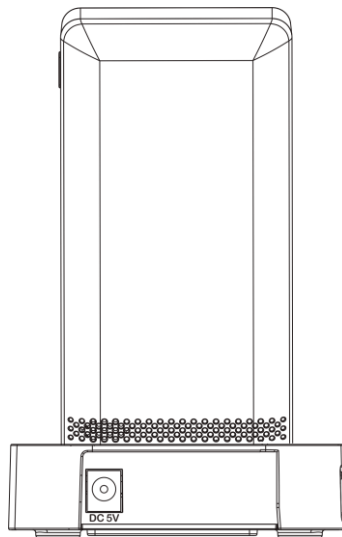
## Front View



item	Name	Description
1	Display screen	Touchable display
2	Power key	Press to power on/off
3	Function key	
3-1	Home key	Press to return to idle page
3-2	Dial key	Press these keys to enter phone numbers.
3-3	Service key	Press to enter service page.
3-4	Dialing Instruction key	Press to enter Dialing Instructions page.

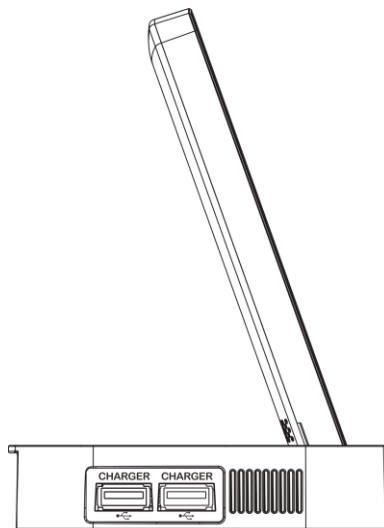
item	Name	Description
		Red LED turns on when handset is charging, Red LED turns off when handset is fully charged,
3-5	Speaker key	Press to activates the speakerphone for hands free conversations.
3-6	Volume+ -	Press to increase or decrease the volume of the ringer tone, handset, or speakerphone.
3-7	Language key	Press to select display language
3-8	Message key	Press to listen to voice messages. Red LED turns on while there is unheard voice message.

### Rear view



Name	Description
DC jack	Connects to AC power adapter.

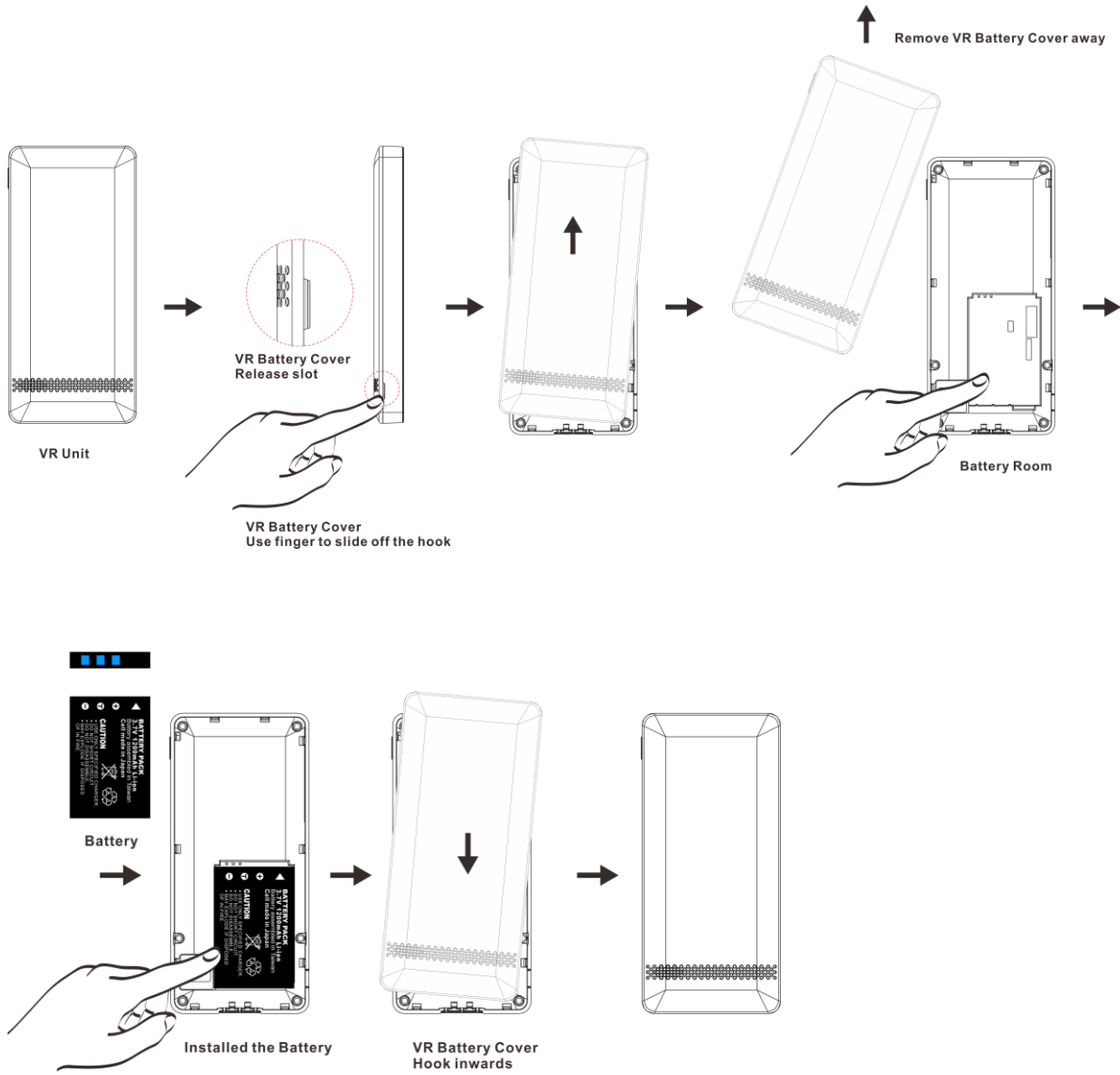
### Side view



Name	Description
USB Charger ports	Connects to charging cable of mobile device.

## Battery Installation


The following illustration shows how to install the handset and battery.



## 3. Operations


### Answering a Call

An incoming call is indicated by a ringing tone. You can answer the call by doing one of the followings:

- Press the **Dial** key  on the handset to answer the call.


### Making a Call

Press **Dial** key for numerical keypad.

- Press to enter the telephone number with green dial key  to make a call..

### Using the service function

To use the pre-assigned service function for the most commonly dialed numbers. Use the function to dial a number quickly, instead of keying in a complete number.


- Press **Service** key. 
- Tap the icon to call desired service.

### Using the Speaker Phone

- While talking on the phone, press the **SPEAKER** key  on the phone fo hands free conversation.

### Charging the Handset Battery

You would need to charge the handset battery before using the handset.

- Install the battery into the handset.
- Place the handset onto the base unit and base unit will start to charge the handset automatically.
- This icon  will show charging progress.

## 4. Support

For technological support, please email to [support@aeicommunication.com](mailto:support@aeicommunication.com).