

VR-8X00-SPBU



Quick Guide V1.02

VR-8X00-SPBU DECT peripheral handset phone

1. Overview

This phone is a full-feature telephone that provides voice communication. Read this QIG carefully to learn how to operate this product and take advantage of its features.

Package Contents

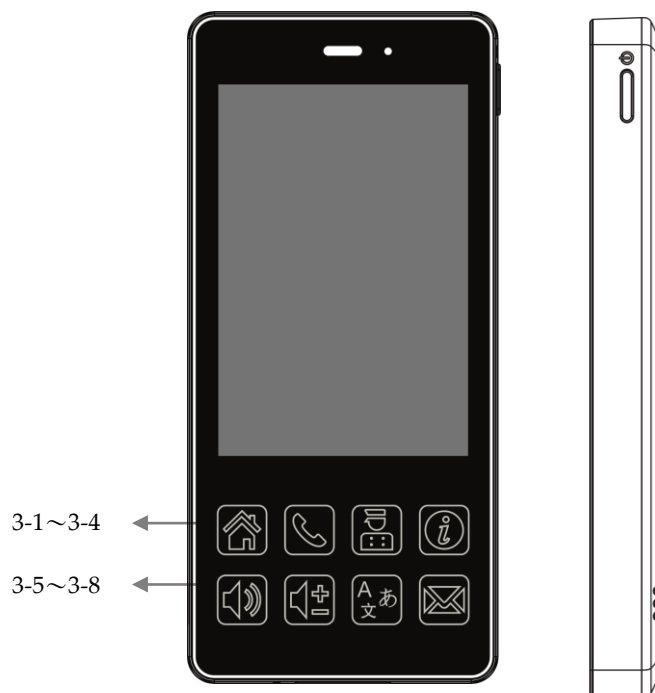
When unpacking the phone, ensure all the following items are present and undamaged. If anything appears to be missing or broken, contact your dealer for a replacement.

1. Cordless Handset
2. Charging Stand
3. Battery
4. AC Adaptor
5. Quick Installation Guide (This document)

2. Product Description

The following contains important information to help you familiarize with the functions of the phone.

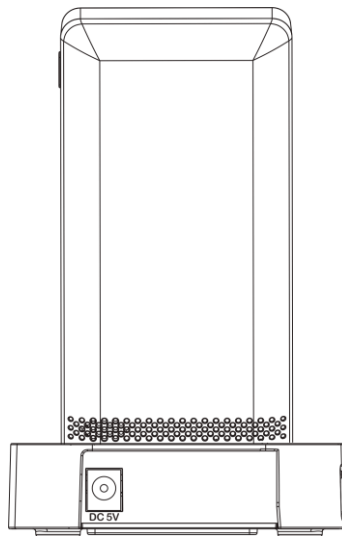
Front View



item	Name	Description
1	Display screen	Touchable display
2	Power key	Press to power on/off
3	Function key	
3-1	Home key	Press to return to idle page
3-2	Dial key	Press these keys to enter phone numbers.
3-3	Service key	Press to enter service page.
3-4	Dialing Instruction key	Press to enter Dialing Instructions page. Red LED turns on when handset is charging.

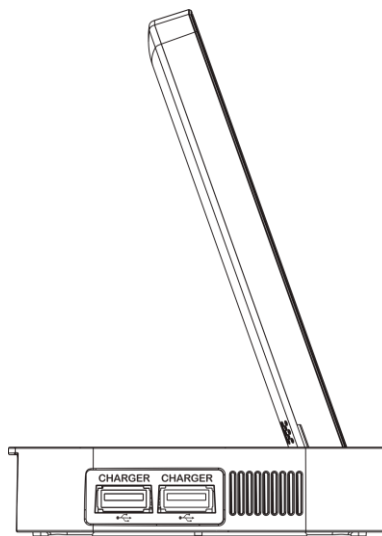
item	Name	Description
		Red LED turns off when handset is fully charged,
3-5	Speaker key	Press to activates the speakerphone for hands free conversations.
3-6	Volume + -	Press to increase or decrease the volume of the ringer tone, handset, or speakerphone.
3-7	Language key	Press to select display language
3-8	Message key	Press to listen to voice messages. Red LED turns on while there is unheard voice message.

Rear view



Name	Description
DC jack	Connects to AC power adapter.

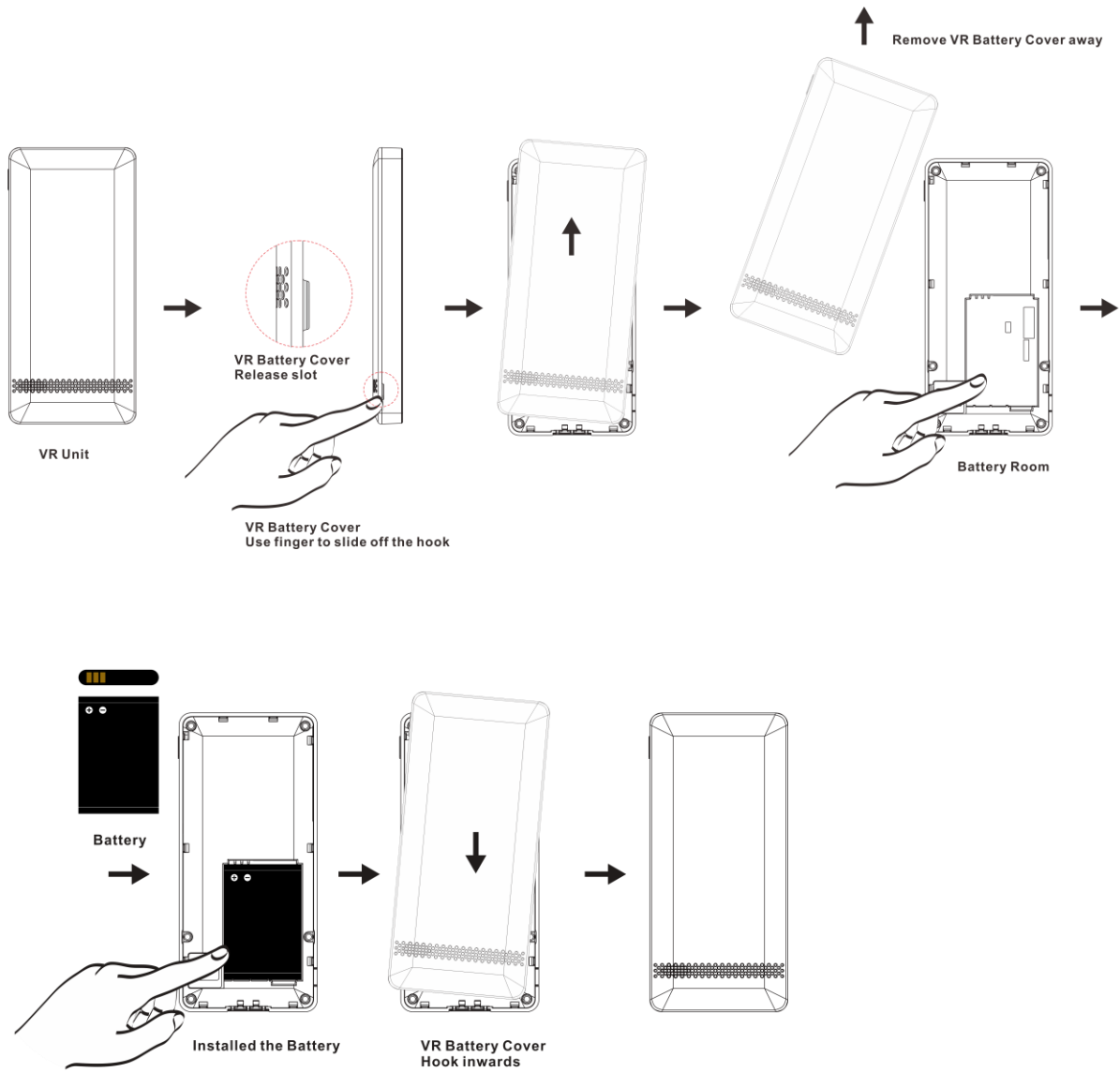
Side view





Name	Description
USB Charger ports	Connects to charging cable of mobile device.

Battery Installation

The following illustration shows how to install the handset and battery.



3. Phone setup

At dialing page , press [****6862*** ] to enter system setup menu.

1. Pair
Pair with DECT base.
2. Desubscribe
Desubscribe with the DECT base.
3. Upgrade APP (Supported HTTP only)
Update system firmware (fixed by Auto Provision setting).
4. Upgrade DATA (Supported HTTP only)
Update system partition (fixed by Auto Provision setting).
5. Wi-Fi AP Scan
Scan nearby APs, select desired AP and enter password to connect.
* Press [?123] and [ABC] to switch between number and alphabet.
6. Factory Reset
Reset phone to factory default.
7. Exit
Exit system setup menu.

4. Summary of system commands


At dialing page , press following and  to execute commands:.

**6862*	Enter system setup menu
**6865*	Display firmware version
**6866*	Display DECT version
**6867*	Retrieve AEI tool UDP config
**6868*	Restart phone set
**6862*#	Auto provision use MAC Address config file type
**6862*888#	Auto provision use 888 room number config file type
**6861*192*168*168*253#	Set provision server IP to 192.168.168.253

5. Operations


Answering a Call

An incoming call is indicated by a ringing tone. You can answer the call by doing one of the followings:

- Press the **Dial** key  on the handset to answer the call.


Making a Call

Press **Dial** key for numerical keypad.

- Press to enter the telephone number with green dial key  to make a call.

Using the service function

To use the pre-assigned service function for the most commonly dialed numbers. Use the function to dial a number quickly, instead of keying in a complete number.


- Press **Service** key. 
- Tap the icon to call desired service.

Using the Speaker Phone

- While talking on the phone, press the **SPEAKER** key  on the phone for hands free conversation.

Charging the Handset Battery

You would need to charge the handset battery before using the handset.

- Install the battery into the handset.
- Place the handset onto the base unit and base unit will start to charge the handset automatically.
- This icon  will show charging progress.

6. Support

For technological support, please email to support@aeicommunication.com.